

## What is the EIT?

The European Institute of Innovation and Technology (EIT) drives innovation in Europe by supporting entrepreneurs, innovators and students across Europe to turn their best ideas into reality.

## How does the EIT work?



Trains a new generation of entrepreneurs

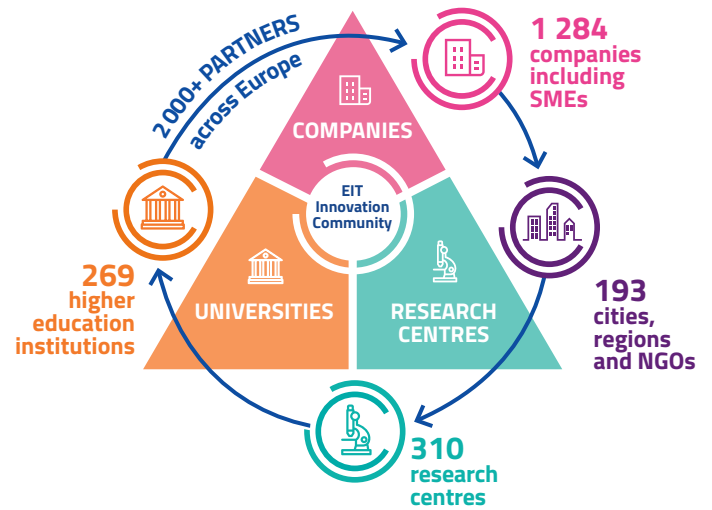


Develops innovative products and services



Power start-ups & scale-ups

## Europe's largest innovation community



**EIT Climate-KIC**  
Working to accelerate the transition to a zero-carbon economy

**EIT Digital**  
Driving Europe's digital transformation

**EIT Food**  
Leading a global revolution in food innovation and production



**EIT RawMaterials**  
Developing raw materials into a major strength for Europe

**EIT InnoEnergy**  
Achieving a sustainable energy future for Europe

**EIT Health**  
Giving EU citizens greater opportunities to enjoy a healthy life



**EIT Manufacturing**  
Strengthening and increasing the competitiveness of Europe's manufacturing industry

**EIT Urban Mobility**  
Smart, green and integrated transport

The EIT's Innovation Communities create and find innovative solutions to major societal challenges

## Powering innovators across Europe



13 000+ Jobs created



3.3B€ Investment raised by EIT ventures



3 200+ Ventures supported



1 170+ New products and services



3 100+ Graduates completing EIT programmes



60+ Innovation Hubs across Europe