



EIT Regional Innovation Scheme **2018**

eit.europa.eu





Introduction

Innovation has a prominent role in Europe's efforts to tackle major societal and environmental challenges. The European Institute of Innovation and Technology (EIT) is working towards this objective through its operational arm, the Innovation Communities, by accelerating innovation and supporting the creation of conditions where innovation is more likely to thrive and generate breakthroughs.

The [EIT Regional Innovation Scheme](#) Report provides an insight into the achievements of the EIT's Innovation Communities in strengthening the innovation ecosystem in parts of Central, Eastern and Southern Europe. It outlines the main on-the-ground activities, deployed services and cooperation mechanisms with local players that took place as part of the EIT Regional Innovation Scheme. In addition, it highlights success stories of start-ups and innovators that have benefited from the collaboration with the EIT Innovation Communities and created an impact with their innovative solutions.

In the past two years, the EIT and its Innovation Communities have introduced a number of new services and collaboration mechanisms in the supported countries. To this end, the EIT Regional Innovation Scheme was reinforced and used as a tool to engage with a broader range of stakeholders. With this report, the EIT wishes to highlight the results of the efforts of its Innovation Communities in boosting the spirit of innovation and entrepreneurship.

The report takes a close look at business support services that the EIT's Innovation Communities have set up to increase the number and business maturity of start-ups coming from these regions. In the following pages, readers can also find testimonials and success stories from supported entrepreneurs. In a similar fashion, the report summarises education and innovation support activities that have helped create a generation of innovators.



The EIT

Institute with a vision for Europe

The EIT is an EU body that boosts Europe's ability to innovate. The EIT nurtures entrepreneurial talent and supports new ideas by fully integrating the entire innovation value chain: from student to entrepreneur, from idea to product, from lab to customer, including scaling

up the successful start-ups. Fostering innovation is more than providing financing. Innovation needs a pipeline of ideas and talent and a healthy ecosystem to enable it. The EIT creates such an ecosystem by bringing together leading companies, universities and research centres to form dynamic partnerships called Innovation Communities spanning across Europe.



From student to entrepreneur



From idea to product



From lab to customer



Driving innovation in Europe!

EIT Innovation Communities



EIT Climate-KIC



EIT Digital



EIT Food



EIT Health



EIT InnoEnergy



EIT Manufacturing



EIT Raw Materials



EIT Urban Mobility

*EIT Manufacturing and EIT Urban Mobility will begin their operations in 2020



EIT Regional Innovation Scheme

EIT Regional Innovation Scheme – bridging the countries

Although we share one continent, European countries are divided because of disparities in innovation performance. This has resulted in the classification of European countries in two main groups—innovation leaders and strong innovators versus moderate and modest innovators.¹ One reason for lower innovation performance is weak linkages among the key players—businesses and research institutions and academia, as well as between the private and public sectors, including a systematic approach towards innovation.

The innovation divide also shows itself in the participation levels of EIT Innovation Communities activities—there are fewer players involved from countries of modest and moderate innovation performance. As a response to this challenge, the EIT Regional Innovation Scheme (EIT RIS) was introduced.

The EIT RIS is designed for EU Member States and Horizon 2020 Associated Countries in Europe who are modest and moderate innovators, and where Innovation Communities have few or no partners. Strategically, the Scheme is an additional offer to these countries to facilitate their engagement with the EIT Innovation Communities. As such, the EIT RIS is not the sole method of participating in the activities of the EIT Innovation Communities.

The Scheme's aim is to facilitate the access to services and programmes offered by the EIT Innovation Communities.

EU Member States:

Bulgaria, Croatia, Cyprus, Czech Republic, Estonia, Greece, Hungary, Italy, Latvia, Lithuania, Malta, Poland, Portugal, Slovakia, Slovenia, Spain, Romania

H2020 Associated Countries in Europe:

Albania, Armenia, Bosnia and Herzegovina, Faroe Islands, Republic of North Macedonia, Georgia, Moldova, Montenegro, Serbia, Turkey, Ukraine



1 European Innovation Scoreboard

The objective of the EIT RIS

is to widen participation in the EIT Innovation Communities' activities by engaging players from countries that have lower participation in EIT Innovation Communities.

The EIT and its Innovation Communities aim to achieve its objective by engaging local organisations and individuals in EIT Innovation Community activities; sharing good practice, experience and know-how emerging from the EIT Communities' activities with local innovation ecosystems; and offering tailor-made services to address identified innovation gaps. As such, the EIT will contribute to boosting innovation in EIT RIS countries and strengthening linkages among key innovation actors.

The ambition of the EIT

RIS is to contribute to boosting the innovation capacity of countries and regions that are modest and moderate innovation performers.

The EIT Community connects innovation ecosystems across Europe.

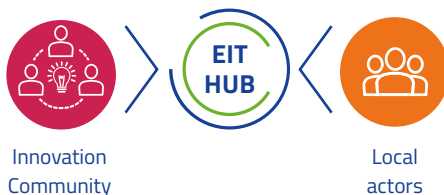




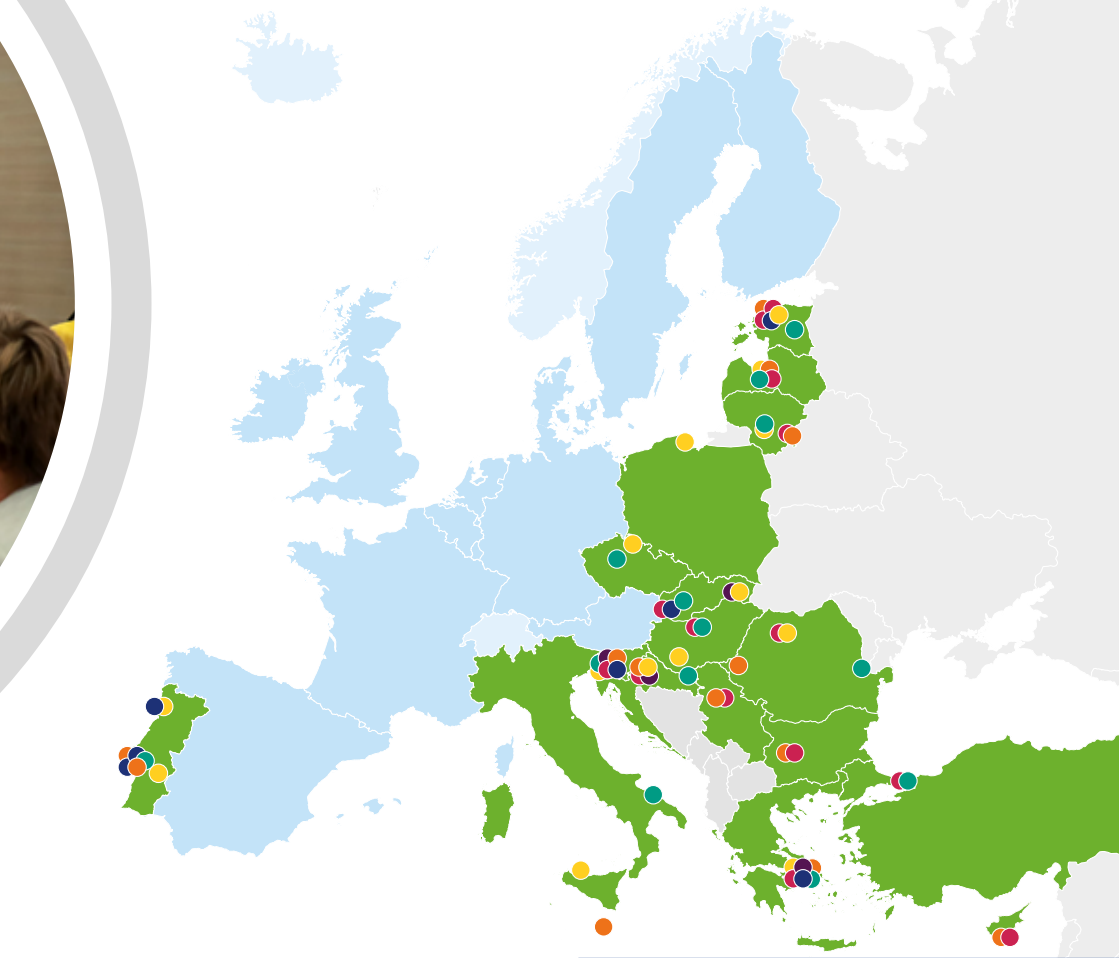
EIT Hubs

EIT Hubs – strong footing in local innovation ecosystems

EIT Innovation Communities engage **local organisations to serve as EIT Hubs** in EIT RIS countries and regions. Local organisations are selected through an open competitive selection process, and are designated to function as an EIT Hub for a specific Innovation Community. The primary role of an **EIT Hub** is to ensure the visibility of the EIT Community and raise awareness of EIT Community activities and cooperation opportunities for local players representing education, business and research areas. EIT Hubs also liaise with the relevant national, regional and local authorities and facilitate the sharing of EIT Innovation Community expertise with them.



EIT Hubs are meeting points between EIT Innovation Community and local players



EIT Innovation Community Hubs

- EIT Climate-KIC
- EIT Digital
- EIT Food
- EIT Health
- EIT InnoEnergy
- EIT Raw Materials

Find a full list of EIT hubs here: <https://eit.europa.eu/our-activities/outreach/eit-regional-innovation-scheme-ris>

To date there are more than **60 EIT Hubs** in **18 EIT RIS countries** representing EIT Innovation Communities. Nevertheless, a number of EIT RIS activities, such as participation in business creation and education programmes, are also open to EIT RIS eligible countries and regions where no EIT Hubs have yet been designated.

Each EIT Innovation Community adapts its own way of working with a hub based on the individual strategic considerations.

Why engage with an EIT Hub?

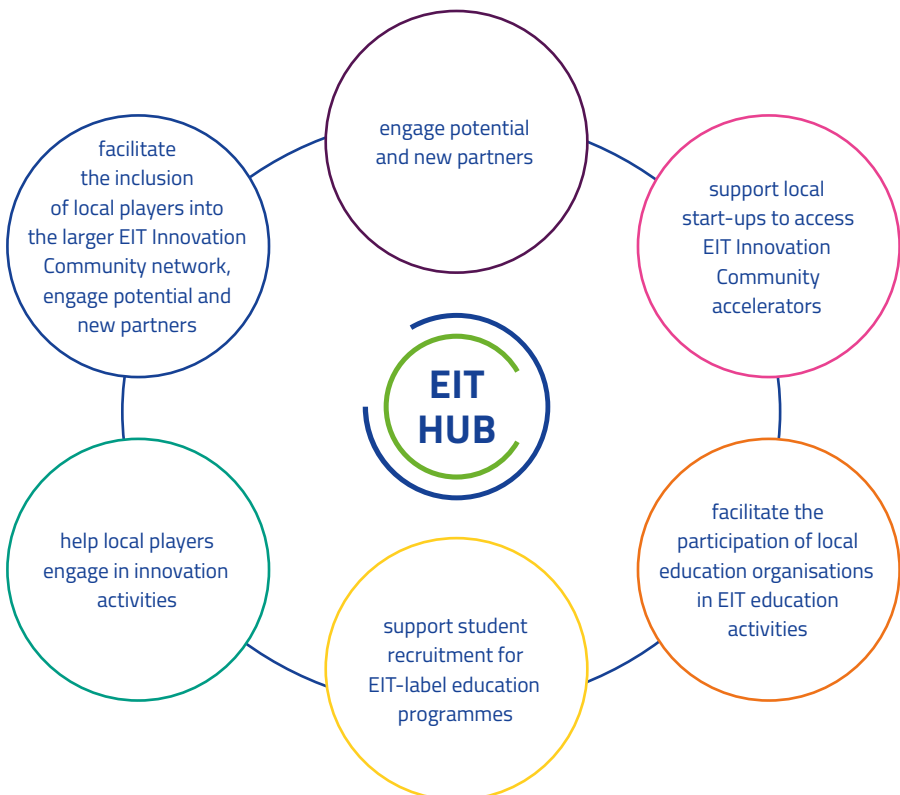
EIT Hubs also help identify additional funding and project opportunities and provide advice to project / initiative / programme development and implementation, where necessary. This is done with a view to facilitating EIT model adaptation to the local environment.

The ambition is to scale the EIT Hubs into regional and national innovation hubs that can spark the desired cooperation and co-creation among local business, research, academia and public sector players. This will stimulate the use of local competences and resources for a stronger innovation output.



Being part of the EIT Climate-KIC community through the EIT Regional Innovation Scheme has helped us join forces locally, while leveraging the expertise and tools of a vast international network to boost climate innovation in Cyprus and the Eastern Mediterranean region.

Stelios Yiatros, Chrysalis Leap – EIT Climate-KIC Hub Cyprus



How does the EIT contribute to the innovation capacity of EIT RIS countries?

By doing what we know best—integrating the activities of business, research and education. We create a seamless chain of services for an idea to grow into a product, conquer the market and create positive socioeconomic change.

With the EIT RIS we achieve this in three steps:

- 1** Involving local stakeholders in EIT Innovation Community networks
- 2** Strengthening local innovation actors:
 - **start-ups** via tailor-made business support programmes
 - **research facilities** by facilitating utilisation of their intellectual assets
 - **individuals** by offering them training, co-creation and study courses
 - **universities** by involving them in EIT education programmes
 - **government and public bodies** by offering policy advice and cooperating on policy implementation
- 3** Mobilising and strengthening local networks

41 universities and research institutions from Albania, Bosnia and Herzegovina, Bulgaria, Cyprus, Estonia, Montenegro, North Macedonia, Portugal, Serbia, Slovenia and Ukraine.

44 public and governmental institutions and non-governmental organisations from Bosnia and Herzegovina, Bulgaria, Cyprus, Estonia, Greece, Croatia, Hungary, Lithuania, Latvia, Malta, Poland, Portugal, Romania, Serbia and Slovenia.

627 start-up teams in business support programmes from all EIT RIS countries except Armenia, Faroe Islands and Georgia.

Around 900 individuals from all EIT RIS countries except Armenia, Faroe Islands and Georgia.

As a result of a more visible and active presence of the EIT Community in EIT RIS countries, in 2018, all EIT Innovation Communities welcomed new partners from EIT RIS countries. In total, **42 organisations** from the following EIT RIS countries have joined the EIT Innovation Communities:² Bosnia and Herzegovina, Bulgaria, Cyprus, Czech Republic, Estonia, Greece, Croatia, Hungary, Lithuania, Latvia, Poland, Portugal, Romania, Serbia, Slovenia and Slovakia.

Funding

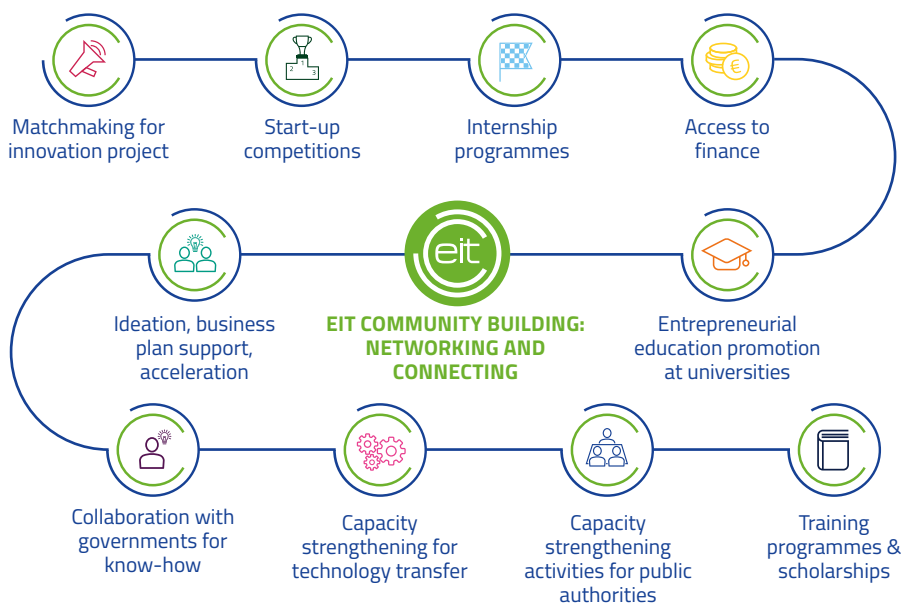
In 2018, EIT innovation Communities invested EUR 15 million of the EIT grant in their EIT RIS activities and programmes.

The EIT started allocating dedicated funding for EIT RIS activities as of 2016, and since then EUR 33 million has been invested.

In addition to the EIT RIS funding, the EIT is, on average, investing around 10% of its grant in the EIT RIS countries.³

2 This includes countries where the EIT Innovation Community does not have an Innovation Hub.

3 Excluding Spain and Italy



Innovation in Action

Innovation in Action:
an insight into EIT RIS activities
in the areas of business creation,
education and innovation

The following chapters provide insights into activities carried out by EIT Innovation Communities in the areas of business creation, education and innovation.

Supporting aspiring entrepreneurs

Becoming an entrepreneur is not an obvious choice for many people. The entrepreneurial spirit has to be ignited and entrepreneurial creativity nurtured and celebrated. This is particularly the case in EIT RIS countries where EIT Innovation Communities encounter a stronger reluctance towards creating their own businesses than in other parts of Europe.

To stimulate prospective entrepreneurs, the EIT Innovation Communities have designed special business creation and competition programmes for the EIT RIS countries. They help bolster the business maturity of new entrepreneurs and showcase local innovations.

Participation of start-up teams in the EIT RIS business creation programmes

Country	Number of teams
Spain	30
Portugal	25
Italy	27
Greece	43
Turkey	37
Poland	13
Czechia	29
Slovakia	2
Hungary	19
Romania	1
Bulgaria	1
Malta	1
Sweden	59
Finland	19
Norway	28
Ireland	15
France	45
Germany	54
Austria	59
Switzerland	37
Netherlands	19
Belgium	1
Luxembourg	1
Denmark	6
United Kingdom	6
United Kingdom	6

TOTAL 627 teams

EIT CLIMATE-KIC, in cooperation with its EIT Hubs, has been running its EIT RIS Accelerator since 2016. To date, the Accelerator programme is offered in 11 countries—Bulgaria, Croatia, Estonia, Greece, Latvia, Lithuania, Malta, Portugal, Romania, Serbia and Slovenia. The Accelerator supports cleantech entrepreneurs from EIT RIS eligible countries and regions, and provides education, training, networking opportunities and grants to businesses at the forefront of climate change adaptation and mitigation.

Supported through the EIT Climate-KIC RIS Accelerator in 2018, the Serbian start-up, **Odo Ride**, developed a mobile service for passenger transport in a modern urban environment. Their Odo cab is a lightweight, innovative and smart vehicle, which offers environmentally sustainable electric transportation through the use of solar panels.

Another start-up, Estonian **FuseBox**, attracted an additional investment of EUR 50 000 from a Lithuanian Energy company as a result of taking part at the Accelerator.



In 2018, **EIT Digital** launched its **ARISE** Venture Programme focused on the Eastern and Western Balkans. The programme, a two-stage competition, supports the establishment of deep-tech-based ventures. After a competitive selection process, EIT Digital selected 15 teams out of 104 applicants. The programme included a two-day boot camp followed by a six-week pre-acceleration phase. Teams that managed to incorporate their ventures and advance their minimum viable product had the chance to apply for the Final Prize. In this way, the Venture Programme supported the **creation of 13 new ventures** in 2018.

Born out of the EIT Digital **ARISE** programme, the Greek start-up, **Embiots**, produces an embedded IoT system for better management and maintenance of power tools.

In 2019, the programme is being expanded to other EIT RIS countries, and is being implemented in partnership with EIT Digital cooperation partners ABC Accelerator in Slovenia, Foundation in Greece, Startup Wise Guys in the Baltics and BGI in Portugal:

- Foundation in Region 2: Albania, Bulgaria, Cyprus, Greece, Romania
- Startup Wise Guys in Region 3: Czech Republic, Estonia, Latvia, Lithuania, Poland, Slovakia
- BGI in Region 4: Malta, Portugal

EIT HEALTH has extended its business support programmes to EIT RIS countries and is providing additional support for start-ups to take part. EIT Health offers its European Health Catapult and European Headstart programmes to the EIT RIS countries and regions. The European Health Catapult is a training and competition platform, jointly organised by EIT Health and Health Axis Europe. It has accelerated start-ups in biotech, medtech and digital health by providing them with high-quality training in business plan modelling, deal negotiation and pitch training, as well as facilitated access to top-level investors. Finally, it awards the best-of-the-best business concepts.

The European Headstart Funding Programme supports early start-ups that have a well-developed prototype and are ready to launch a product.

In addition to these two programmes, the EIT Health introduced the InnoStars Awards programme specifically designed for the EIT RIS eligible countries and regions. The InnoStars Awards is a programme for business development and product validation. Selected candidates participate in the InnoStars Final pitch event.

EIT Health also involves start-ups from the EIT RIS countries in its Smart aging bootcamp, Health Venture lab and Go2China programmes.

In 2018, **51 start-ups** received EIT Health support through different programmes.

Polish start-up, **DrOmnibus**, combines behavioural science and new technologies in a unique way to build a digital therapeutics platform dedicated to neurocognitive and developmental disorders like Autism, Mild

Cognitive Impairment/Pre-Alzheimer, Post-Stroke, Traumatic Brain Injury or Sensorineural Hearing Loss.

DrOmnibus benefited from the EIT Health Headstart programme in 2017, and took part in the European Health Catapult 2018, a training and competition programme.

DrOmnibus is also in a relationship with Google. The giant from Mountain View chose DrOmnibus for the Google Launchpad Accelerator, where the team worked with mentors and experts on the company's growth strategy. After the accelerator, the companies continue to work together. Google has highlighted DrOmnibus several times as a start-up to watch with excellent business and impact achievements and opportunities.

The start-up raised more than 45 million EUR.

Jason Tutus, Google VP;



These three entrepreneurs recognize the need to provide therapy at scale for autistic children. In response, they created DrOmnibus, an app-based learning platform that provides games for children with special education needs. The game allows students to learn behaviour patterns and responses to real-life scenarios and their teachers and therapists can review their progress. The best part is that students can play these games on their own, allowing them to receive therapy every day rather than once a week, which makes an incredible impact long-term. This is just one of many stories of how the European developmental community is making a big impact.



EIT INNOENERGY has ran the Primer programme since 2018 together with its hubs. The overall goal of *Primer* is to increase the quality of energy-related start-ups in Europe and set a new, unified standard in terms of early stage acceleration. In 2018, altogether **164 start-ups benefited** from the programme.

Every year EIT InnoEnergy runs its highly successful PowerUp! competition for energy, cleantech, mobility, cybersecurity and smart city start-ups with financial awards up to EUR 50 000 and an opportunity of EUR 150 000 investment! PowerUp! is open to start-ups from 24 countries: Bulgaria, Albania, Croatia, Armenia, Bosnia and Herzegovina, The Czechia, Estonia, Republic of North Macedonia, Greece, Georgia, Hungary, Malta, Moldova, Montenegro, Latvia, Serbia, Lithuania, Turkey, Ukraine, Poland, Cyprus, Slovakia, Slovenia and Romania.



Roofit.solar

metal roofs that produce electricity

The company introduced a new type of solar panel which looks like a traditional metal roof but is an innovative 2-in-1 solution which combines everyday roofing material and photovoltaic modules.

The award was sponsored by Veolia (Poland).

Estonian start-up Roofit.Solar won the EIT InnoEnergy PowerUp! Clean Air Challenge Award 2019.

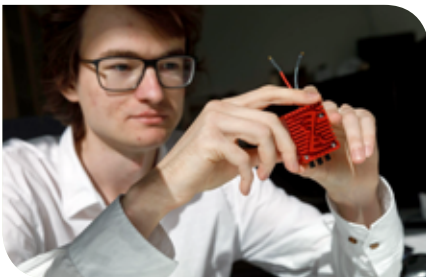


The quality of air is one of the most important challenges faced by local governments and industry in Poland. This is why all solutions that contribute to its improvement deserve recognition and support. We are very glad that young companies create new technologies in this area and share our values: “resourcing the world” and care for the environment. Being the first patron of the Clean Air Challenge Award makes us very proud.” – says Fabien Ferrer, Deputy Executive Director Veolia Group in Poland.

Roofit.solar also took part at the EIT Climate-KIC RIS Accelerator in 2018.



Zubax



The grand prize in 2018 went to **Zubax Robotics** from Estonia. The start-up provides approximately 10% more energy efficient electric motor controllers for aerospace applications. Their technology allows electric vehicles (especially aircraft) to travel further using less battery power, thus alleviating one of the most significant obstacles in the way of total electrification of all kinds of transport.

The winner of PowerUp! 2019 was a Slovak start-up Danubia NanoTech. The company developed a solution for real temperature monitoring in a form of a graphene temperature sensor, available as an extremely thin film, applied on any non-metallic substrate. Technology is valuable for EV batteries and for grid battery storage, extending the batteries' lifetime.

PowerUp! ventures going to Highway®

EIT InnoEnergy continues to support young start-ups who have shown great potential in the EIT RIS programmes. The Innovation Community launched a process of signing Business Creation Services agreements with several ventures that took part in the PowerUp! competition.

EIT InnoEnergy considers that business support programmes created for the EIT RIS counties help mobilise local communities and attract new partners to the Innovation Community. For instance, the PowerUp! competition has had a positive effect on the image of EIT InnoEnergy and attracting new partners. The Innovation Community will continue to use PowerUp! as a means to grow the network of its partners.

EIT FOOD RIS Innovation Grants support start-ups to increase their commercial readiness and support business development activities. The programme was launched in 2018, and has supported **26 teams** to date.

Since 2017, **EIT Health**, **EIT Food** and **EIT RawMaterials** jointly run an EIT RIS cross-sectoral business creation programme, EIT Jumpstarter, for early stage entrepreneurs. In 2018, it trained **67 teams** of future entrepreneurs.



The three Innovation Communities launched the pre-acceleration to help research move from lab to market. At the same time the programme validates business concepts, real-life needs for products, and connects best-of-the-best teams with large industrial partners from the Innovation Communities' networks, such as GE Healthcare, Siemens, Philips,

Roche, Bosch, Nestlé, Pepsico, MaspeX, among others.

The curriculum was based on the lean start-up methodology from Silicon Valley and adapted to the European environment. During the programme, participants are trained in fundamental entrepreneurial skills, learn about market segmentation, develop value proposition, financials and work on strengthening their competitive advantage.

In 2018, twenty-one teams were then selected to proceed to individualised thematic education and mentoring programmes, five of the teams being from health, six from food and 10 from raw materials. In November, at the Joint Grand Final, teams pitched in front of an international expert jury.

However, the journey of the teams did not end there. They receive further support and advisory from EIT Health, EIT Food and EIT RawMaterials regarding the next stages of their start-up development. Innovation Communities introduced the teams to partners, VCs, regulatory bodies and companies that can produce their products, their first buyer or a test site. They met major innovation hubs in Europe from within the EIT Community, which is important when these start-ups want to enter foreign markets.





The most important thing we got during the competition is valuable feedback on various aspects of our business, partners and general advice about how to start our business. EIT is down the right road to bring us up to par with innovation capitals like San Francisco.

Marios Chrysosolouris, Freshstrips

Freshstrips makes a low-cost, easy-to-read sticker which is put on the outside of food packaging, and which then changes colour if the food is exposed to unsuitable temperature during transportation.

Ekolive is a Slovakian start-up which graduated from the EIT Jumpstarter in 2018. It offers ecological biotechnology for refining locally available mineral resources into high-quality raw materials as an on-site service. The founding team of the start-up is predominantly female, and all team members come from the research area. The training and support provided during the EIT Jumpstarter helped the idea to develop into a solid business plan. The high quality business plan allowed the start-up to enter the EIT RawMaterials business creation programme for further



Ekolive founding members accepting the EIT RIS winning prize at the Joint Grand Final in Budapest on November 16, 2018

development. In addition, the start-up is also involved in the EIT RawMaterials **innovation project** focusing on the bio-treatment of raw materials.

Ekolive's core team had their first informative contact with EIT RawMaterials at a *Meet the EIT Community* event in Košice in November 2017. The start-up is currently working with EIT RawMaterials on a bioleaching innovation project, led by the Technical University of Košice. The project consists of a large international consortium of 11 EIT RawMaterials partners from all over Europe.

Through EIT RIS more climate innovators

In 2018, EIT Climate-KIC extended its *Climathon* — a climate hackathon — to 18 cities: Cascais, Lisbon, Ljubljana, Maribor, Nicosia, Nis, Nova Gorica, Novi Sad, Riga, Sofia, Tallinn, Timisoara, Torres Vedras, Valletta, Varazdin, Vilnius, Zagreb and Zajecar. Through the EIT Regional Innovation Scheme more than 600 young innovators engaged in 'hacking' local solutions for climate challenges.

In total, 113 cities ran in 2018, gathering over 5 000 participants.



The unique cross-industrial incubation programme created by EIT Health, EIT RawMaterials and EIT Food was also acknowledged by the European Association Awards. *EIT Jumpstarter* won the Best Association Training Initiative 2019 award.

'EIT Jumpstarter is a unique cross-industrial scheme that [...] was designed to create a sustainable impact in Central, Eastern and Southern Europe by boosting innovation and entrepreneurship to revolutionise the EU market' — emphasized the jury of the European Association Awards, when selecting EIT Jumpstarter as winner of the Best Association Training Initiative in 2019.



In focus

Start-ups from the EIT RIS countries are increasingly taking part in the EIT Innovation Communities' pan-European accelerators, which help them access finance, new markets and find first customers. This section puts in focus a few start-ups that have successfully finalised their innovative products and kick-started the business operations.



ALINA, supported by EIT RawMaterials.

Latvian start-up ALINA has developed ALINA LIFE, an innovative and environmentally friendly clay mineral material that prolongs the life and improves the appearance of building products. They use an innovative production technology that make state-of-the-art clay mineral materials, taking responsibility for people and the environment they live in.

ALINA was part of the EIT RawMaterials Booster Programme. In 2017, the company was nominated for the EIT VENTURE Award. In 2018, the company raised EUR 550 000 and was listed among the top 25 New Clean Technologies and Business Models from the Nordics and Baltics.



The EIT Community is an excellent springboard to grow and scale your business

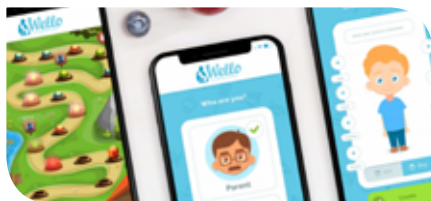
Solvita Kostjukova CEO, ALINA



WELLO, supported by EIT Health

Romanian start-up Wello has developed an Artificial Intelligence platform for nutrition of overweight children that can change the way families understand their health.

The Wello platform aims to be the digital engine and source of validated information in nutrition and healthy lifestyle, providing a credible source for information about nutrition, helping parents create healthy meal plans for their children. Using machine learning techniques and using gamification based results, Wello developed a fun way for family members to engage together in a social game about a healthy lifestyle.

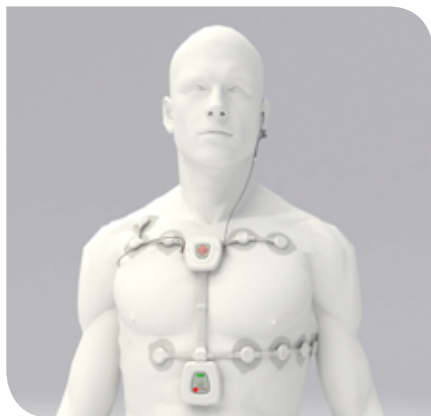


The platform also motivates and evaluates health progress using Artificial Intelligence, advice from professional nutritionists, and location-based recommendations for healthy food.

Wello was selected by EIT Health in 2018 as one of ten highly innovative companies to participate in EIT Health's GoGlobal Israel-Canada Accelerator Programme. They travelled to Israel where they benefited from the worldwide renowned hub of innovation and a potential next international strategic market.



Check Point Cardio, supported by EIT Digital



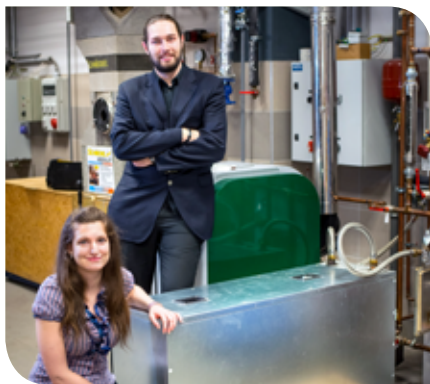
Bulgarian start-up Check Point Cardio offers a solution that monitors parameters such as heart rate, breathing, and body temperature and transfer this data, in real-time, 24/7 to an experienced medical team. In February 2018, the scale-up joined the EIT Digital Accelerator after being introduced by EIT Digital ARISE Europe.

In 2018, Ivaylo Dachov was nominated for the EIT VENTURE Award. Check Point Cardio operates in Greece, Russia, Austria and Germany, helping over 36,000 patients. In October 2018, Check Point Cardio became an EIT Digital partner and is involved in an Innovation Activity aiming at bringing to the European market of medical/wellbeing services a new semi-automatic AI-empowered telemedicine service for remote monitoring of cardiac conditions for people at high risks of critical cardio-vascular complications.



HeatVentors, supported by EIT InnoEnergy and EIT Climate-KIC

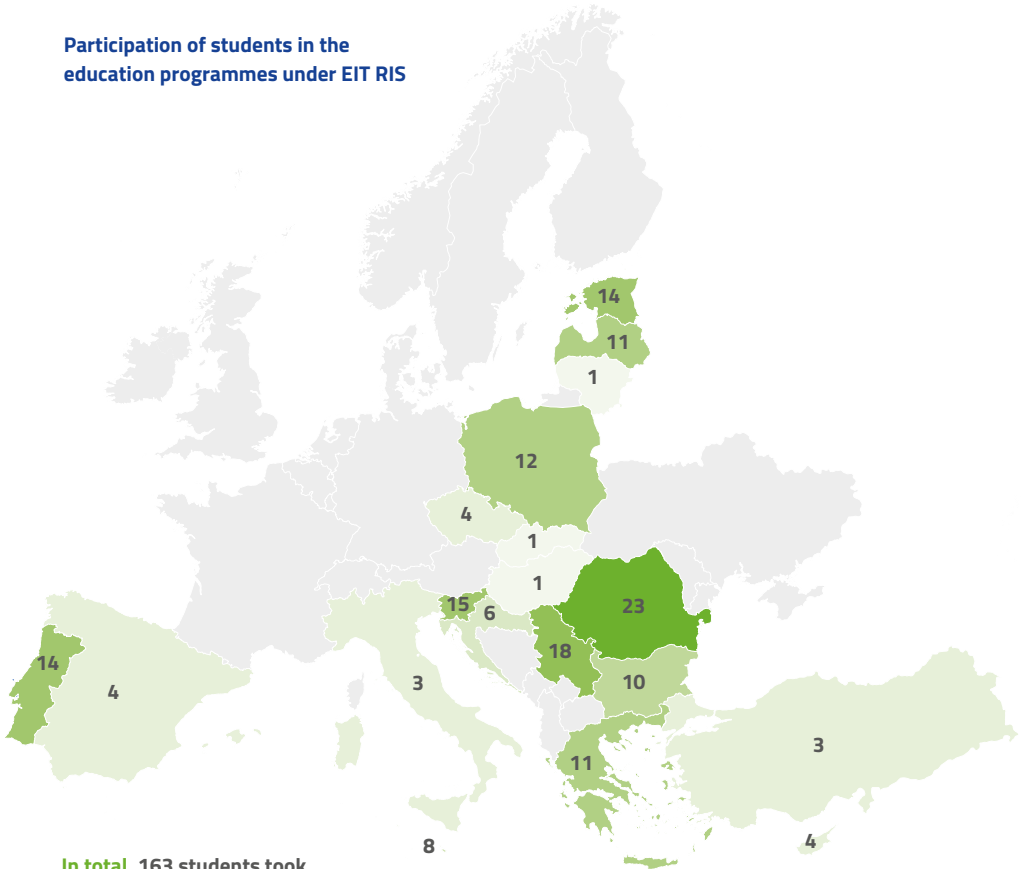
Hungarian start-up HeatVentors has produced the world's first thermal energy storage for data centres and office/factory buildings. Their technology allows customers to cut their energy consumption by 20-40 percent and to reduce their greenhouse emissions by 30-50 percent. The technology has a variety of applications: from deep freezing and industrial technologies to comfort cooling and heating. After five years of research, the start-up now have a pending patent for their cutting-edge technology.



The start-up took part in the EIT Climate-KIC Accelerator programme and received seed funding support of EUR 10 000. In addition, HeatVentors won the EIT InnoEnergy's PowerUp! Competition for innovative energy start-ups in 2017, awarding them EUR 20,000.

The start-up was established in 2017, and currently is awaiting a patent award.

Participation of students in the education programmes under EIT RIS



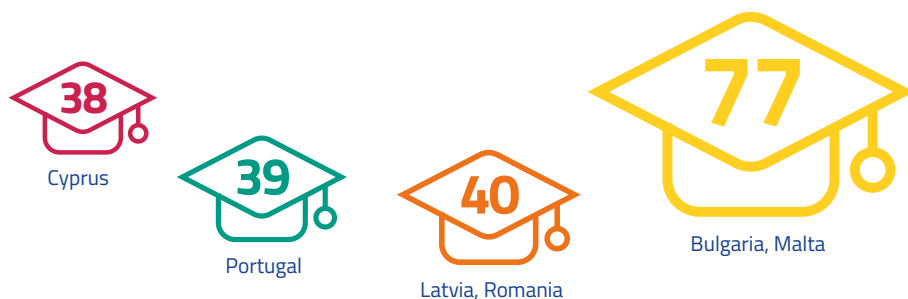
In total, 163 students took part in education courses

Education activities under EIT RIS

Education is an integral part of the EIT innovation model. By the same token, Innovation Communities offer a series of education activities as part of their EIT RIS portfolio. EIT Innovation Communities run a number of thematic education programmes, as well as summer schools.

The **EIT Health StarShip** Innovation Fellowship programme trains its participants to find solutions to the challenges facing the health industry, verifying user requirements and identifying potentially unmet needs in the area of health. The programme was nominated as the Best Association Training Initiative by the European Association Awards 2019. **16 students** from the EIT RIS countries graduated from the programme in the year of 2018.

Students from across Europe showed high interest in joining the Journey:



EIT Climate-KIC extends its highly popular *Journey* and *Pioneers into Practice* to EIT RIS eligible countries and regions and their local universities.

In 2018, the *Journey* was hosted in six EIT RIS countries—Bulgaria, Cyprus, Latvia, Malta, Portugal and Romania. **Over 300 students** joined the *Journey* in these six countries. For instance, in Sofia, Bulgaria, the *Journey* programme engaged the Sofia municipality which showed interest in potential pilot testing of suitable journey solutions.

Pioneers into Practice gathered **90 participants** from the EIT RIS countries. For instance, in Portugal, the group projects of the programme were framed within the Smart Specialisation strategies of Lisbon and the Tagus Valley.

EIT Digital brings universities in EIT RIS eligible countries and regions into the EIT Label summer school programme. It has hosted summer schools in Tallinn, Estonia and Lisbon, Portugal. In Tallinn, the summer school focused on mobility issues, and the curricula included cooperation with local companies, including Bolt (formerly Taxiify). In Lisbon, the summer school focused on longer independent living where participants worked on their business cases,

turning their ideas into viable business plans with a start-up strategy, marketing and financial planning in collaboration with local companies.

In 2018 each summer school attracted **39 participants**.

In 2019 for the first time the University of Ljubljana joined the summer school, and ran a programme on digital transformation for resilient cities.

In 2018, **EIT Food** ran its RIS fellowships programme. The fellowships enable interns, students and graduates from EIT RIS eligible countries and regions to engage in learning-by-doing activities at EIT Food partner organisations and benefit from cross-country mobility. In total, **25 fellows** from EIT RIS countries benefited from the programme.

The long-term goal of the EIT Community is to involve more higher education institutions in the EIT education activities, particularly in the EIT label programmes. Furthermore, the EIT Community is investigating the best formats on how to support regional universities in strengthening their role within local ecosystems.

Innovation support activities under EIT RIS

EIT Innovation Communities invest increasing efforts in matchmaking activities to support organisations from EIT RIS countries to partake in innovation activities. For instance, EIT Climate-KIC ran a number of ideation activities for innovation projects linked to urban transitions and circular economy. In 2018, EIT Health carried out an asset mapping exercise with the research organisations that are cooperating with the Innovation Community via its EIT RIS programme. In 2019, based on the mapped assets, the organisations continue to work on innovation project proposals with EIT Health and its partner consortia. EIT Food, in its turn, addresses specific food industry challenges, such as poultry.

EIT RawMaterials implements a vast portfolio of projects to support the mining industry in the Western Balkans and other EIT RIS countries by involving a high number of external stakeholders, as well as bringing new partners into its network. At large, the KIC has focused its projects on the waste and residual management and secondary resources, as well as on mining exploration and unlocking new business opportunities in the EIT RIS countries. Among others, the KIC, its partners and entities in the Balkan area work on de-soiling new waste-derived raw materials and developing new applications. Across the spectrum, the EIT RawMaterials invests in capacity building in mineral management and designing tools to facilitate investment decisions. In the Baltics, for instance, the KIC is working on solutions for a sustainable use of Phosphorous.

EIT RawMaterials tie the innovation projects with education and business creation. The KIC runs a university based educational and experts' supported training programmes

focusing on topics such as zero waste management, deep intelligent mining, small mining sites and recycling.

In order to accelerate market uptake for potential solutions for mining and recycling, the EIT RawMaterials seeks and promotes new business ideas for the circular economy and raw materials. By way of example, the KIC works with aspiring entrepreneurs and innovation managers from SMEs using pattern recognition techniques and gamification to enhance their skills to recognise opportunities and identify suitable circular business models.

EIT InnoEnergy's Starter programme bridges the EIT RIS academy teams and industry actors, with a view to creating marketable projects. In 2018, EIT InnoEnergy ran two pilot events in cooperation with the Jagiellonian University and the University of Science and Technology in Krakow.

20 teams graduated from the programme by presenting their projects in front of investors during two Demo Days.

The *Starter* is designed for university engineering teams who work on a technological solution and who lack access to senior business advice in their ecosystem. The programme is building on existing actors in their structure, such as Technology Transfer Centres, Incubators, Tech Parks, and adds a high-level of expertise and practical experience. In addition, through *Starter*, EIT InnoEnergy facilitates the establishment of new industrial collaborations for universities. As a result, the engineering teams are well prepared for cooperation with industry and investors.

Future outlook

EIT Regional Innovation Scheme (EIT RIS) was introduced in 2014 in the context of disparities in innovation performance across Europe with an aim to widen its regional outreach to modest and moderate innovator countries. In 2018 the EIT further strengthened the Scheme by placing a stronger focus on strengthening the capacity of the local innovation actors and ecosystems at large. Through the EIT RIS, the EIT Innovation Communities created programmes tailored to the specificities of the region. The EIT Innovation Communities also expanded their activities and networks by involving a larger number of organisations from the EIT RIS countries. This is also reflected in the share of EIT funding allocated to EU-13 partners (8.3% as compared to 4.8% in Horizon 2020 as of 2018).

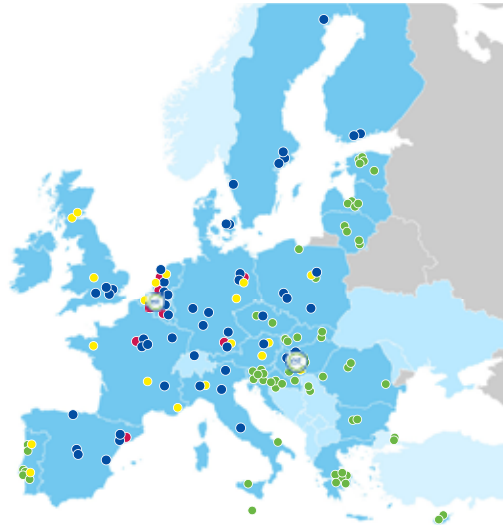
Looking into the future, the EIT in the post-2020 period will take a stronger “place-based” approach by building on the EIT Hubs and their networks and seeking synergies with

policies and funding programmes of EIT RIS countries. EIT will continue to support the innovation ecosystems of countries and regions that underperform in terms of innovation by promoting closer interactions among the local innovation actors (clusters, networks, national and regional authorities, Higher Education Institutions, research organisations, vocational education and training institutions). The EIT Innovation Communities will deliver activities and programmes that develop local talent and enhance local innovation output.

EIT Regional Innovation Scheme will be fully integrated in the EIT Innovation Communities' strategies which will facilitate a stronger participation in their activities and networks across the whole of Europe. Ultimately, by interconnecting networks and innovation ecosystems across the European the EIT will be able to enhance the European innovation output through combined efforts, knowledge, talent and other intellectual assets.

EIT COMMUNITY ACROSS EUROPE

- Headquarters
- Innovation Hubs (Co-Location Centres)
- Offices
- EIT Hubs under the EIT Regional Innovation Scheme



Manuscript completed in September 2019

First edition

Neither the European Institute of Innovation & Technology (EIT) nor any person acting on behalf of the EIT is responsible for the use that might be made of the following information.

European Union, 2019

ISBN 978-92-95082-44-1

doi:10.2850/328277

© European Institute of Innovation & Technology, 2019

Reproduction is authorised provided the source is acknowledged.

For any use or reproduction of photos or other material that is not under the copyright of the European Institute of Innovation & Technology, permission must be sought directly from the copyright holders.

All images relating to the innovators and entrepreneurs herein, and their products, services or ideas, were provided by those innovators and entrepreneurs, and copyright belongs to them.