



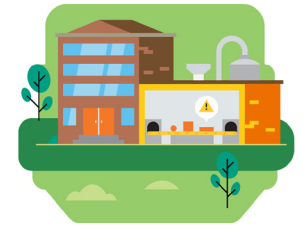
Arpit Singh Parmar

Project Manager

Digitalising material measurement for the mining & metal industry

metheore.com

metheore



METHEORE
A MATTER OF VISION

Main product:

LaserSieve

Aim:

To enable the mining and metal industries to digitalise the techniques of material measurement

EIT labelled programme:
EMerald Master in Georesources Engineering

Challenge:
Measuring throughput in harsh environments



Powered by:



THE PROJECT

The idea

LaserSieve is a non-intrusive and non-disruptive online 3D solution that measures the throughput, size and shape of materials operating in harsh industrial environments. The real-time information helps users to promptly detect any process deviations and take corrective action.

Inspiration

I realised the potential impact of digitalisation on the raw materials sector during my studies. This prompted me to work on a prototype which eventually transformed into a commercial solution.

Unique selling points

The 3D imaging technology, the design to operate under harsh industrial conditions (dust, water, etc.), the versatility to measure material on conveyor belts and even in free fall, the cloud-based interactive dashboards, the plug & play set-up, and the machine to machine communication abilities, are the unique selling points of our solution.

Societal impact

Our solution enhances the occupational safety standards of the workplace by reducing human exposure to high dust environment and hazards. Its implementation optimises industrial operations through continuous productivity improvement, efficient use of energy and raw material resources, eventually resulting in reduced carbon emissions.

Sustainable Development Goals

The solution certainly promotes the sustainability goals of ensuring healthy lives in the workplace, and sustainable consumption and production patterns, thereby contributing to the efforts to counter climate change.

EIT Community support

The EIT RawMaterials Accelerator Programme allowed us to identify our beachhead market and establish a scalable business model. We are mentored on financial planning and expansion strategies and we have also received support during the Covid-19 pandemic under the booster funding initiative of EIT RawMaterials.

THE NOMINEE

Entrepreneurial spirit

I gradually acquired an entrepreneurial mind-set through my master's thesis. I left my full-time position at a big consultancy firm to rejoin the core team of Metheore and continue my endeavour.

An ideal world

A world where sensitivity towards the prevalent global environmental issues would be universally instilled through robust education for sustainable development during early childhood.

EIT RawMaterials Accelerator Programme allowed us to identify our beachhead market and establish a scalable business model.

